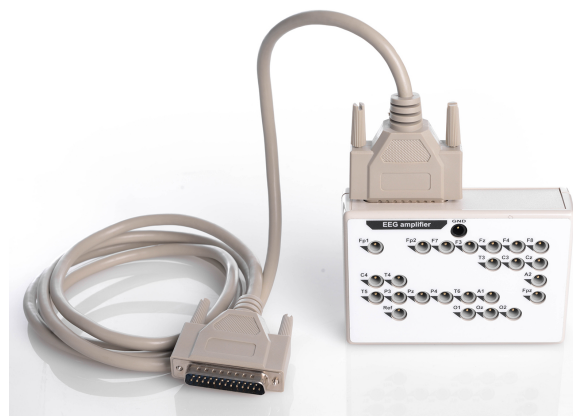


NVX2CAP-24 adapter

Adapter for connecting up to 25 electrodes, including GND with a TouchProof 1.5 mm connector to an amplifier with a DB-25F connector.

REF

003-6-002



SET

- NVX2CAP-24 adapter,
- 1.8 m cable for connecting to amplifiers with a DB-25F connector,
- operational documentation.



DESCRIPTION

NVX2CAP-24 adapter is a passive adapter (switch) for connecting EEG electrodes with a TouchProof 1.5 mm (DIN 42 802-ST) connector to EEG amplifiers.

NVX2CAP-24 adapter can be used in cases when it is necessary to quickly disconnect or connect patient-mounted electrodes to an EEG amplifier, for example, when registering a somnogram, or when it is necessary to increase the distance from the patient to the amplifier.

Marking of leads on the adapter corresponds to the system 10-10.

ATTENTION!

-  *Increasing the distance from the electrodes to the amplifier generally increases the level of interference from external sources (pickup) on the signal.*
-  *1.8 m connecting cables used in NVX2CAP have their own inter-wire capacitance up to 200 pF. For example, with an interelectrode resistance of 10 kΩ, the signal will additionally be attenuated by no more than 0.2% at a frequency of 150 Hz, but at a frequency of 80 kHz the attenuation will be already 30%.*

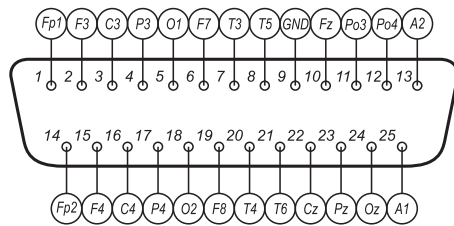


SPECIFICATION

Connector 1 type (to cap)	25 TouchProof 1.5 mm (DIN 42 802-BU)
Connector 2 type (to amplifier)	DB-25M
Maximum number of electrodes to connect	25
Adapter / Extension lenght	1.8 ±0.05 m
Net weight	< 500 g
Gross weight	< 500 g

MAIN PIN LAYOUTS OF COMMON CONNECTOR

Connector DB-25 (see model number on a back side):



Model 1
(Manufacturer's code 11E-01M25)

