

ELECTRODE SET-52

Universal kit of removable Ag/AgCl sintered MCScap-E electrodes with TouchProof 1.5 mm connectors and textile caps with rings.

REF	Size	Textile caps
367154818	Universal	L (54-60 cm), M (48-54 cm), S (42-48 cm)
563457811	Adult	XL/L (57-63 cm), L (54-60 cm), L/M (51-57 cm)
272454244	Children	M (48-54 cm), M/S (45-51 cm), S (42-48 cm)



INTENDED USE

For registration of electrical potentials of the cerebral cortex (EEG).

SET

- MCScap-51 textile caps with fixing rings - 3 pcs.,
- MCScap-E electrodes with TouchProof 1.5 mm connectors - 52 pcs.,
- Labels for electrodes,
- Ear fixators MCScap-A - 2 pcs.,
- EEG starter kit,
- User Manual,
- Bag.

DESCRIPTION


ELECTRODE SET is a universal kit of removable Ag/AgCl sintered MCScap-E electrodes with TouchProof 1.5 mm (DIN 42 802-ST) common connector and MCScap® textile cap with fixing rings. ELECTRODE SET can be used for routine EEG, scientific EEG. The electrode cap is designed for use with electroencephalographs and biological signal amplifiers. The electrode cap is a reusable medical device.

Textile cap is made of elastic material, preserving the shape and size. The cap provides the exact position of the electrodes on the head without additional measurements and adjustments. Large holes are provided for ventilation and access to the electrodes and patient's skin. The cap is fixed on the head with the chin or chest belt. The caps are marked according to the 10-10 system. Size identification is carried out by the color of the seam. Rings in the cap are designed to install point MCScap-E electrodes.

MCScap-E is a point Ag/AgCl sintered electrode for EEG recording. MCScap-E is designed for research that requires frequent installation and quick removal of electrodes for cleaning and disinfection. Used with MCScap textile caps with retaining rings. The Ag / AgCl sintered electrode material guarantees minimum polarization and long-term signal stability, as well as an increased electrode life.

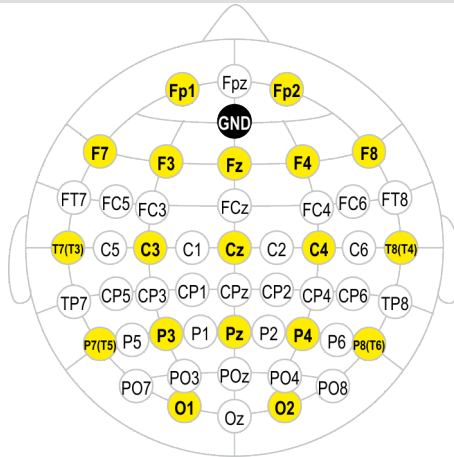
The set of electrodes with TouchProof 1.5 mm connectors is universal and fits most EEG amplifiers.

SPECIFICATION

Types of EEG examinations	general EEG practice, scientific EEG
Recommended body position during examination	sitting position
Electrode	 MCScap-E
Material of electrode conductive surface	Ag/AgCl sintered
Electrode body material	polyurethane
Square of electrode conductive surface	4 mm ²
Internal diameter of the electrode at the point of contact of the electrode contact substance with the skin	8 mm
Surface area of contact of the electrode substance with the skin	50.2 mm ²
Outer diameter of the electrode at the point of contact with the skin	15.8 mm
Distance from the skin to the electrode conductive surface	0.7 mm
The diameter of the hole in the electrode to add gel	2.8 mm
Electrode polarization	≤ 50 mV
Resistance of electrodes insulation	≥ 1000 MΩ
Dielectric strength of electrodes insulation	1500 V
The impedance of the electrode	≤ 5 kΩ
Connector type	TouchProof 1.5 mm (DIN 42 802-ST)
Electrode cable length	1.2 m
Number of EEG electrodes	52
Electrode positions	arbitrary installation
Ear fixators	yes
Marking of the textile cap	yes
Marking of the electrodes	labels are included
Number of textile caps included	3
Weight of EEG cap	< 500 g
Net weight	< 1250 g
Gross weight	< 1300 g



RINGS LAYOUT



Manufacturer's code: 03M51 (51 electrodes)

For information about other possible EEG electrode arrays, contact the manufacturer.